

GY-LASH-LEAFLET-20170706

SIZE:210(W)X297(H)MM PGYL02M010170706

¡STOP! READ THE LABEL BEFORE USING THE PRODUCT AND CONSULT A PROFESSIONAL IN AGRICULTURAL SCIENCES



INSECTICIDE – CARBAMATE
METHOMYL

CHEMICAL GROUP: Methomyl

FORMULATION:

Soluble powder (SP)

REGISTRATION NUMBER: PTCCB/ROT/11/16/339

COMMON NAME (ISO):

Methomyl (900 g i.a per kilogram)

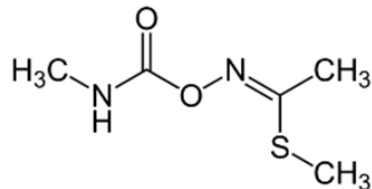
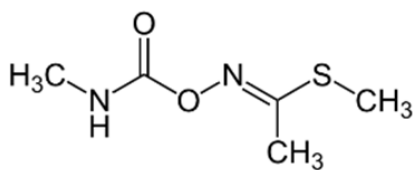
CHEMICAL NAME (IUPAC):

S-methyl N-(methylcarbamoyloxy) thioacetimidate.

Fórmula empírica:

C5H10N2OS

STRUCTURAL FORMULA:



MOLECULAR MASS:

162,21

PHYSICAL AND CHEMICAL PROPERTIES:

Density: 1,246 (25°C)

Solubility: Soluble in water

Explosive properties: It is not explosive

COMPONENTS: Additives c.s.p. 1 kilogram

DISPLAY: 100g, 250g, 500g 1Kg.

FORMULATED BY:



JIANGSU ROTAM CHEMISTRY CO. LTD., CHINA

88 Rotam Road, ETOZ

Kunshan, Jiangsu, City

Tel: 051257711988

Fax: 051257718697

DISTRIBUTED BY:



AGROIN

Lot 1 Public Road

GNSC Compound

La Penitence

Georgetown, Guyana

Tel.: (592) 689 4624;; (592) 231 4901

PRECAUTIONS AND INSTRUCTIONS OF USE:

DO NOT STORE IN HOMES, STORE AWAY FROM CHILDREN, MENTALLY ILL PERSONS DOMESTIC ANIMALS, FOOD AND MEDICINE.

USE THE FOLLOWING ELEMENTS FOR PERSONAL PROTECTION DURING THE PREPARATION OF THE MIXTURE, HANDLING AND APPLICATION: BOOTS, FACE MASK, GOGGLES AND GLOVES.

DO NOT EAT, SMOKE OR DRINK DURING THE HANDLING OF THIS PRODUCT. TAKE A SHOWER AND PUT ON CLEAN CLOTHES AFTER HANDLING AND USING THE PRODUCT.

SYMPTOMS OF INTOXICATION:

It may cause irritation to skin and eyes. Avoid contact with skin and clothing.

FIRSTAID:

INGESTION: Do not induce vomit because pulmonary aspiration might occur. Immediately call a doctor or the National Center for intoxications.

INHALATION: Remove the patient from the contaminated area and expose him to fresh air. Maintain in rest and check his respiration.

CONTACT WITH SKIN: Remove all the contaminated clothing and wash carefully with water and soap for 15 minutes.

CONTACT WITH EYES: open the eye lids and wash with abundant clean water during 15 minutes, consult with a doctor.

NEVER GIVE DRINK OR INDUCE VOMIT TO PERSONS WHICH IS NOT CONSCIOUS.

MEDICAL TREATMENT: Treat symptomatically; Administer abundant liquids if the patient has ingested the product. Temporary allergic reactions can be treated with creams antihistaminic and / or synthetic steroids.

GUARANTEE NOTE

"The manufacturer and registrant guarantee the quality of the product in its original and sealed hermetic container. It also guarantees the efficacy of the product, if it is used as indicated in the pamphlet. Since the storage and handling is out of our control it is impossible to assume the responsibility of damage resulting from such factors. We also guarantee the chemical composition of the product as indicated in the label, when the bottle is originally sealed.

AGRONOMICS USES:

MODE OF ACTION:

LASH[®], is an insecticide based on Methomyl, which belongs to the group of carbamates, which acts by contact and ingestion for the control of insects - pests in various crops. Methomyl is a systemic insecticide and acaricide with contact action and stomach. It is used to control a wide range of insect pest Lepidoptera, Hemiptera, Homoptera, Coleoptera and Diptera, and mites in many crops, lawns, yards and containers and warehouses. It has systematic action and a broad spectrum insecticide control. It inhibits cholinesterase in the nervous system of the insects.

APPLICATION EQUIPMENT:

LASH[®], can be applied with manual or motorized equipment. As back sprayers or by tractor, using high volume, low volume or ULV nozzles. Make sure that the spraying equipment is in good condition. Calibrate with water before spraying. Do not apply trough irrigation systems. Spraying equipment used for the application of LASH[®] requires cleaning according with the manufacturers of the equipment. This product does not have any specific recommendation in this aspect. To realize the application it is recommended to use cone spray tips, to give a good coverage of the foliage. Use the following personal protection equipment while handling, mixing, and using the product: rubber boots, mask, goggles, and gloves.

Crop	Species	Common name	Dose/Ha
Rice	Spodoptera spp	Caterpillar	250-500 gr
Peppers	Myzus persicae	Green Aphid	
Tomatos	Heliothis zea	Tomato Fruit Worm	
	Spodoptera frugiperda	Army worm	
	Myzus persicae	Green Aphid	

APPLICATION INTERVAL:

It depends on the insect and population dynamics. It could be between 3 to 8 days.

Rice, apply with a population level of 10 larvae / m² or 40% economic threshold in masticated leaves.

RE-ENTRY INTERVAL TO AREA TREATED:

48 hours.

COMPATIBILITY:

Do not mix the product with water or alkaline products because cause its hydrolysis.

Avoid mixtures with products based TPTH (triphenyl hydroxide).

It is recommended to test compatibility if any doubt compatibility with other formulations

Rice, do not mix with products based on Propanil.

LASH[®] is not phytotoxic at the doses recommended and crops.

PROTECT THE ENVIRONMENT BY APPLYING GOOD FARMING PRACTICES, COMPLY WITH THE RECOMMENDATIONS GIVEN IN THIS PAMPHLET.

DO NOT CONTAMINATE RIVERS, LAKES AND PONDS WITH THIS PRODUCT OR WITH EMPTY CONTAINERS

COUNTRY:

GUYANA

REGISTRATION NUMBER:

PTCCB/ROT/11/16/339

DATE OF REGISTRATION:

JULY 21ST 2016

LOT NUMBER:

DATE OF FORMULATION:

DATE OF EXPIRATION:

HIGHLY HAZARDOUS